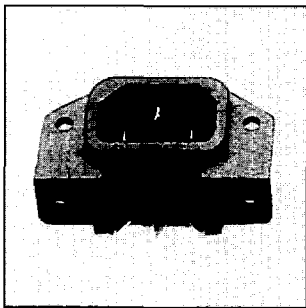
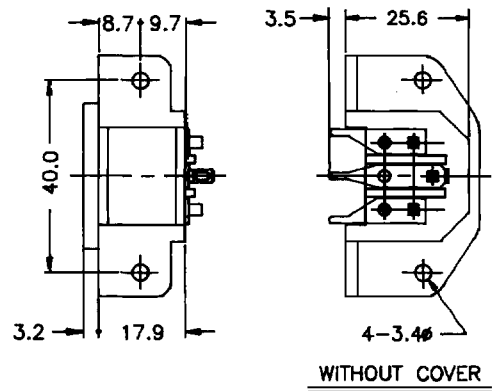
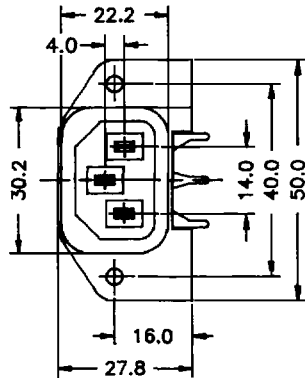


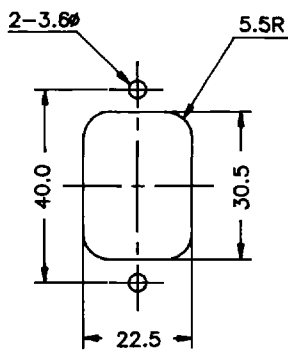
# 3P AC INLET & OUTLET RECEPTACLE



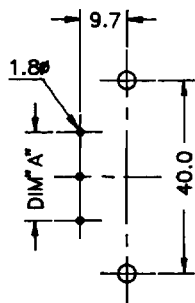
MODEL NO	NEW	2AC-091	SERIES
	OLD	AC-091	SERIES



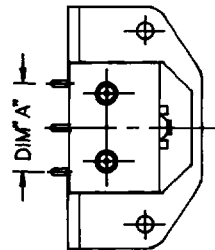
ORDERING CODE: 2AC-091    4



REAR MOUNTING



FRONT MOUNTING

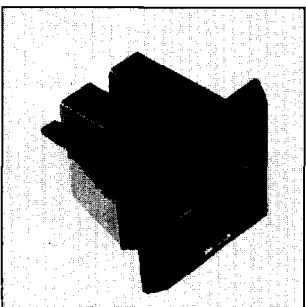


WITH COVER

DIM."A" = 14.0	--	P70
DIM."A" = 18.2	--	P91

WITHOUT COVER	--	O
WITH COVER	----	A

Insulation Resistance: 5000MΩ Min.  
 Dielectric Strength: 2000V Min.  
 Operating Temperature: 65°C  
 15A 250V: UL,CSA.  
 10A 250V: VDE,SEMKO,NEMKO,  
 DEMKO,SEV,FIMKO.



Insulation Resistance: 1000MΩ Min.  
 Dielectric Strength: 1500V Min.  
 Operating Temperature: 65°C  
 15A 125V: UL,CSA.

t	L
0.8	24
1.0	24.6
1.2	25.2
1.6	26.2

MODEL NO	NEW	2AC-01100040
	OLD	AC-011

PANEL CUT OUT DIM.

